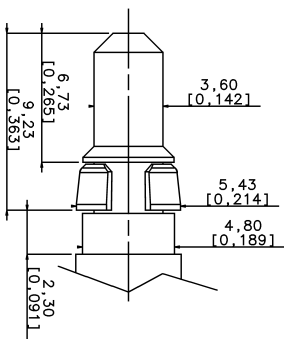


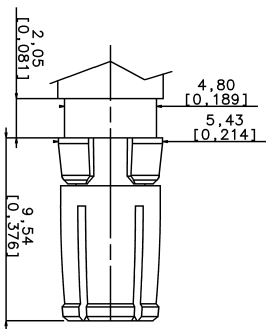
N D'ETUDE N OUTIL N CLIENT

MATERIAL



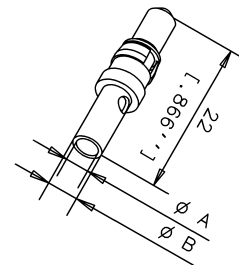
PIN CONTACT
SOCKET CONTACT
RETAINING CLIP
SURFACE PLATING

Cu Zn
Cu Ni
Thermoplastic
Au = 0.5 um



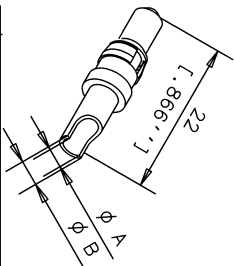
HIGH POWER PLUG

CRIMP VERSION



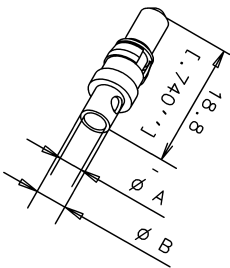
CURRENT PUISSANCE	VERSION A	VERSION B	VERSION A SERTIR
4M540 30R	L17DM53745-208	10A	1.8
4M540 20R	L17DM53745-207	20A	2.8
4M042 36P	L17DM53745-204	30A	3.76
4M540 00R	L17DM53745-201	40A	4.8

SOLDER VERSION

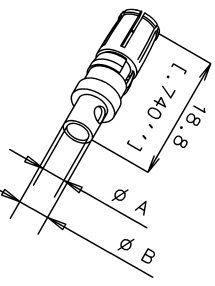


CURRENT PUISSANCE	VERSION A	VERSION B	VERSION A SOLDER
4M040 30C	L17DM53745-8	10A	1.8
4M040 20C	L17DM53745-7	20A	2.8
4M040 00C	L17DM53745-1	40A	4.8

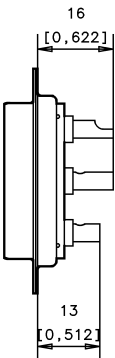
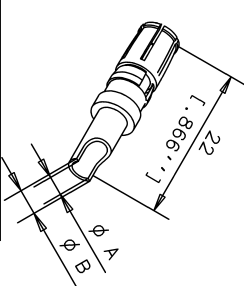
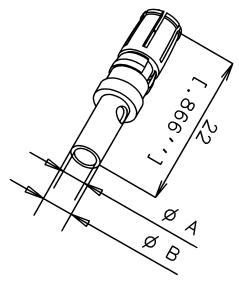
CRIMP SHORT VERSION



CURRENT PUISSANCE	VERSION A	VERSION B	VERSION A SERTIR
4M042 29R	L17DM53745-218	10A	1.8
4M042 19R	L17DM53745-217	20A	2.8
NC	L17DM53745-211	40A	4.8



HIGH POWER JACK



DATE DU TIRAGE			DESIGNATION		
IND. MODIFICATIONS			EXEC. DATE		
VOL. GEN.			TOL. GEN.		
VOLUME PIECE			SURFACE PIECE		
PROTECTION			TRAITEMENT		
MATERIE			MATERIE		
Amphenol Socapex			Usine de Dole		
ECH.			ENS.		
N SERIE			N SERIE		
C			C		

HIGH POWER CONTACTS 0,5 Au